



Gerald R. Ford International Airport

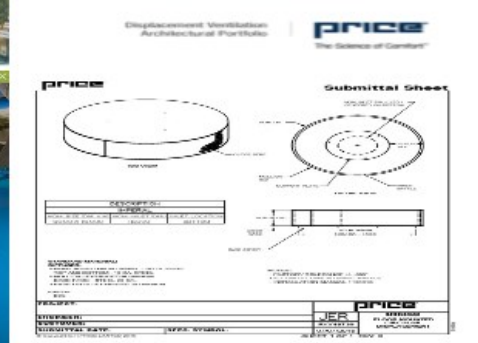
Grand Rapids, Michigan

Michigan Air Provides Ventilation and Air Devices for International Airport

The expansion for consolidated checkpoint at Gerald Ford International Airport combines a mixture of Price Displacement Ventilation and conventional air devices. The Displacement Ventilation Devices are used in seating and in Architectural Designs in the checkpoint areas for comfort and a constant supply of fresh air to spaces. Price Models included are DF1R recessed, DF3 floor/column mounted and DR360 Circular Displacement. Conventional style slot diffusers and ceiling diffusers make up the balance of the duct systems.

PROJECT SUMMARY

BUILDING TYPE	International Airport
LOCATION	Grand Rapids, Michigan
ARCHITECT	TowerPinkster
ENGINEER	TPTA Associates
CUSTOMER	Franklin Holwerda
PROJECT MANAGEMENT	Franklin Holwerda Company
YEAR COMPLETED	2017





© Michigan Air Products. All Rights Reserved.